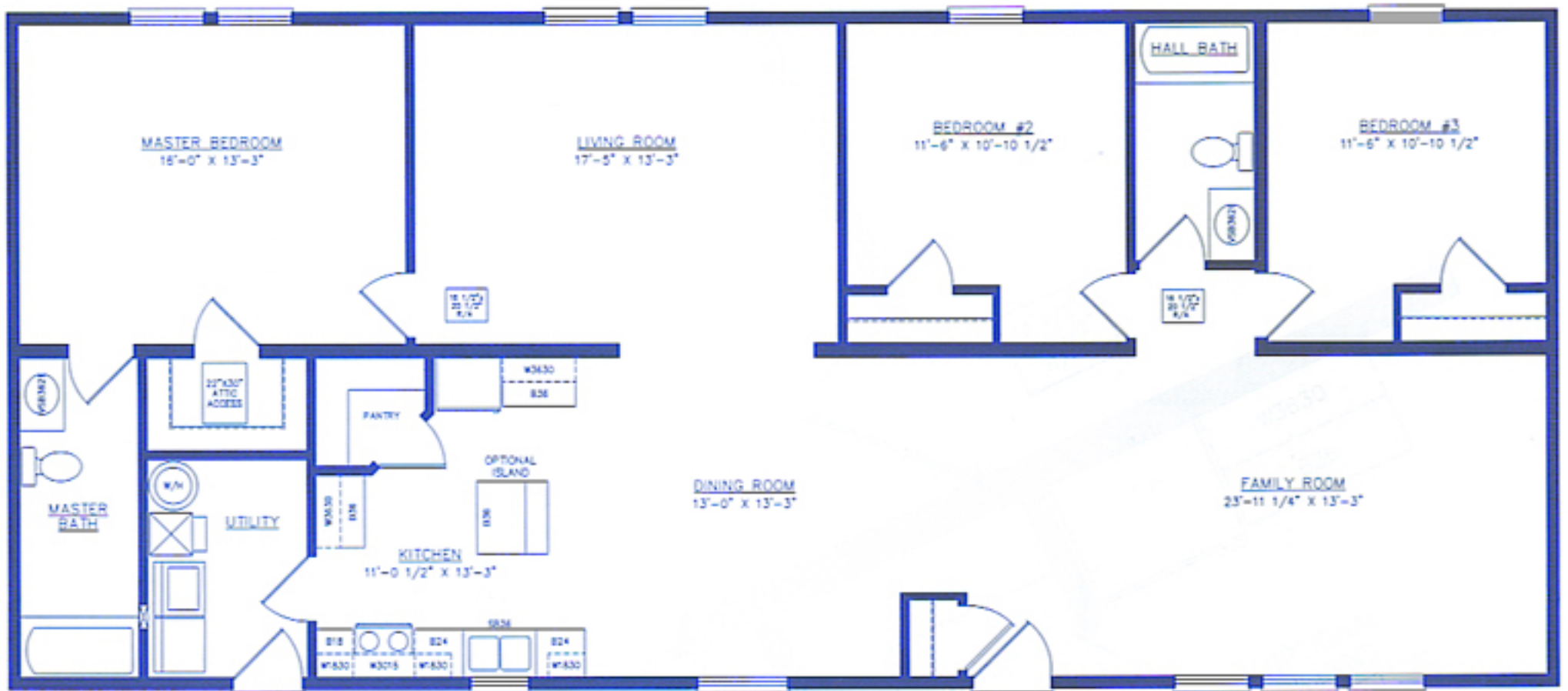




RICHMOND 28' x 64' • 1,792 sq. ft.



Richmond Floor Plan

The options shown to the right are available in the Richmond Home.



Master bath/utility option



Option A



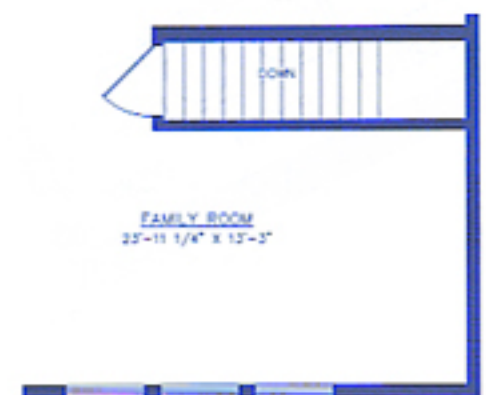
Option B

Sizes available:

28' x 64' • 1,792 sq. ft. (shown above)

28' x 60' • 1,680 sq. ft.

28' x 56' • 1,568 sq. ft.



Standard basement option